

**Sutter's Landing Skate Park, northern terminus of 28th St. at American River
Weds., June 19, 2013, 700-830 pm**

Meeting Purpose: Community "visioning" on near and long term future of Sutter's Landing Park

AGENDA

700 pm	Arrival/sign in	
715 pm	Welcome/Introductions	Councilmember Cohn
	Desired Meeting Outcome(s)	
730 pm	Meeting Process/Staff Presentation	J.P. Tindell
	1. Completed and Funded Improvements	
	2. Proposed Unfunded Projects	
745 pm	Station "Walk"/Provide Comments	
820 pm	Next Steps/Adjourn	Councilmember Cohn

(6) Stations

1. SLP Vicinity Property Ownership
2. 2003 Park Master Plan
3. Completed and Funded Improvements
4. Proposed Unfunded Projects
 - a. West A & B
 - b. East
5. Proposed Park Expansion from Corp. Yard

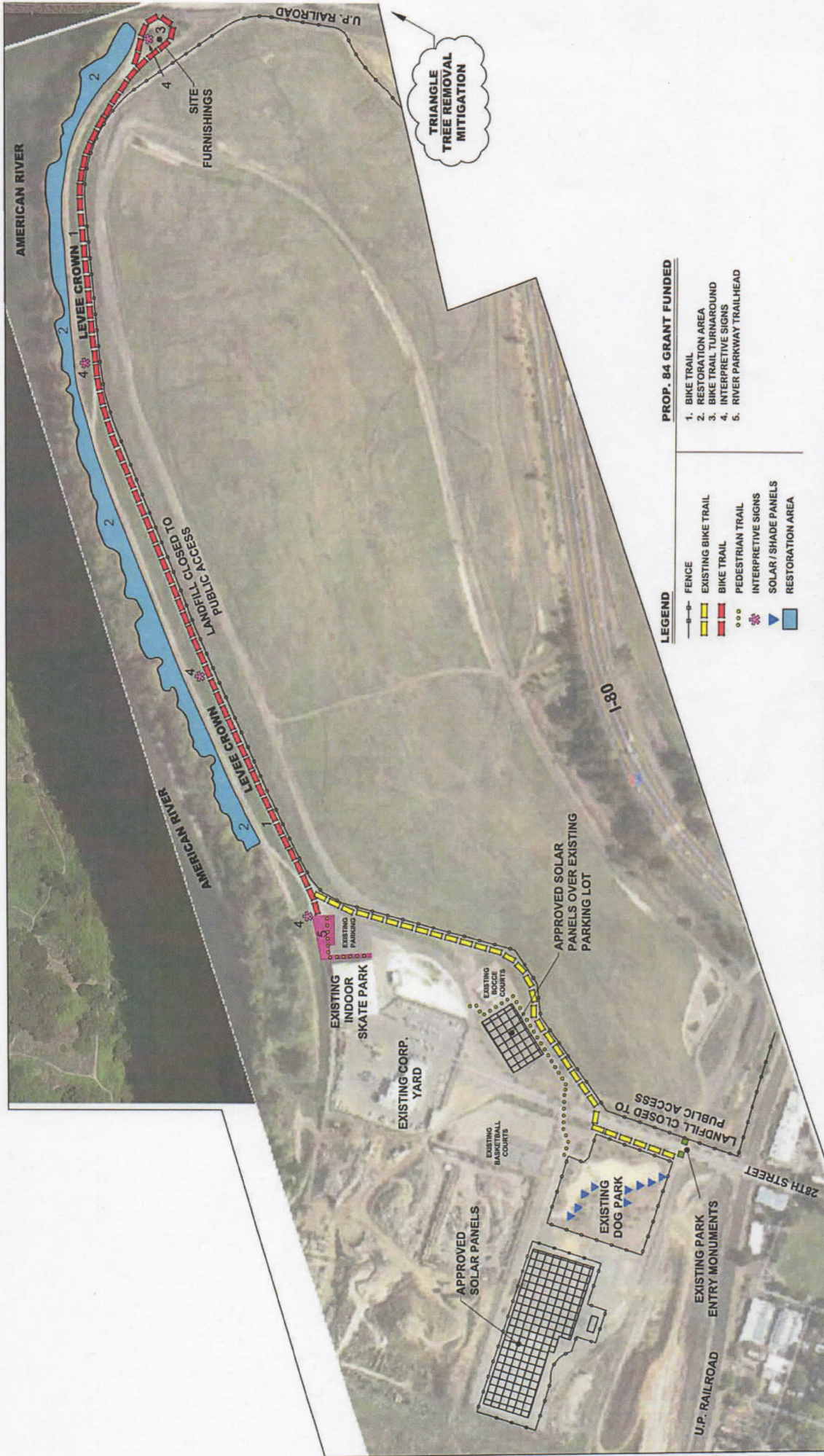
Staff Contacts

Council District 3: Sue Brown, 808-7235, sbrown@cityofsacramento.org

Parks & Recreation: Tin-Wah Wong, 808-5540, twong@cityofsacramento.org

Community Development: Scot Mende, 808-4756, smende@cityofsacramento.org

General Services Solid Waste (Landfill): Steve Harriman, 808-4949, sharriman@cityofsacramento.org



EXISTING & FUNDED IMPROVEMENTS SUTTER'S LANDING PARK

CITY OF SACRAMENTO, DEPARTMENT OF PARKS AND RECREATION
JUNE 2013





PROPOSED UNFUNDED PROJECTS
SUTTER'S LANDING PARK
CITY OF SACRAMENTO, DEPARTMENT OF PARKS AND RECREATION
JUNE 2013



Sutter's Landing Park**Proposed Unfunded Projects**

(*) City considers consistent with 2003 Park Master Plan = Near Term options

SLP West A

- (*) BMX Park/Pump Track (1 ac. min., fenced)
- (*) Complete roadside paths along 28th St. (both sides)
- (*) Additional ADA parking (near Dog Park)
- (*) Added shade and picnic area near Dog Park
- (*) Improved landscaping around Dog Park
- (*) New fencing/wall along rail line frontage
- (*) Sports fields (baseball, softball, soccer, etc.)
- (*) Sports Courts (e.g. Handball, tennis, futsal, volleyball, basketball, ballwall)
- (*) Trail with landscaping (wildlife corridor) east-west immediately south of Dog Park

SLP West B

- (*) Outside Skate Park (gathering place): stage enhancements, amphitheater, pathway, tree grove w/seating, nature themed play area, shade group picnic area
Paved trail riverside next to Harbor Sand & Gravel (currently no levee)
- (*) Lighting at Bocce Courts
- (*) Underground/consolidate SMUD poles/lines
- (*) Additional parking adjacent to existing basketball courts
- (*) New restroom (solar? composting? portapotties? prefab?)

SLP East

- (*) Nature Preserve
- (*) Mound top viewing platform/area (star gazing, etc.)
- (*) Hiking trails
- (*) Biking trails
Widen riparian corridor
Native landscaping of levee slope (water side)
Native landscaping of mound slopes
- (*) City gateway/park sign in triangle
Additional trees between levee and River
- (*) Additional storm water diversion (locations tbd)

SLP Corp. Yard

Consolidate operations/footprint, adding property to Park

West of SLP current boundaries

Acquire land between rail line and River, west to Blue Diamond "plant"
Trail easement acquis. and development north-south along Dellar-Sand & Gravel to River levee

Entire Park

Additional planting throughout
Landscape Plan
Report on current habitat/natural resources
Master Plan Update (with EIR)
Integrated trails and interpretive plan including signage
Directional wayfinding/signage from offsite (to solar etc.)